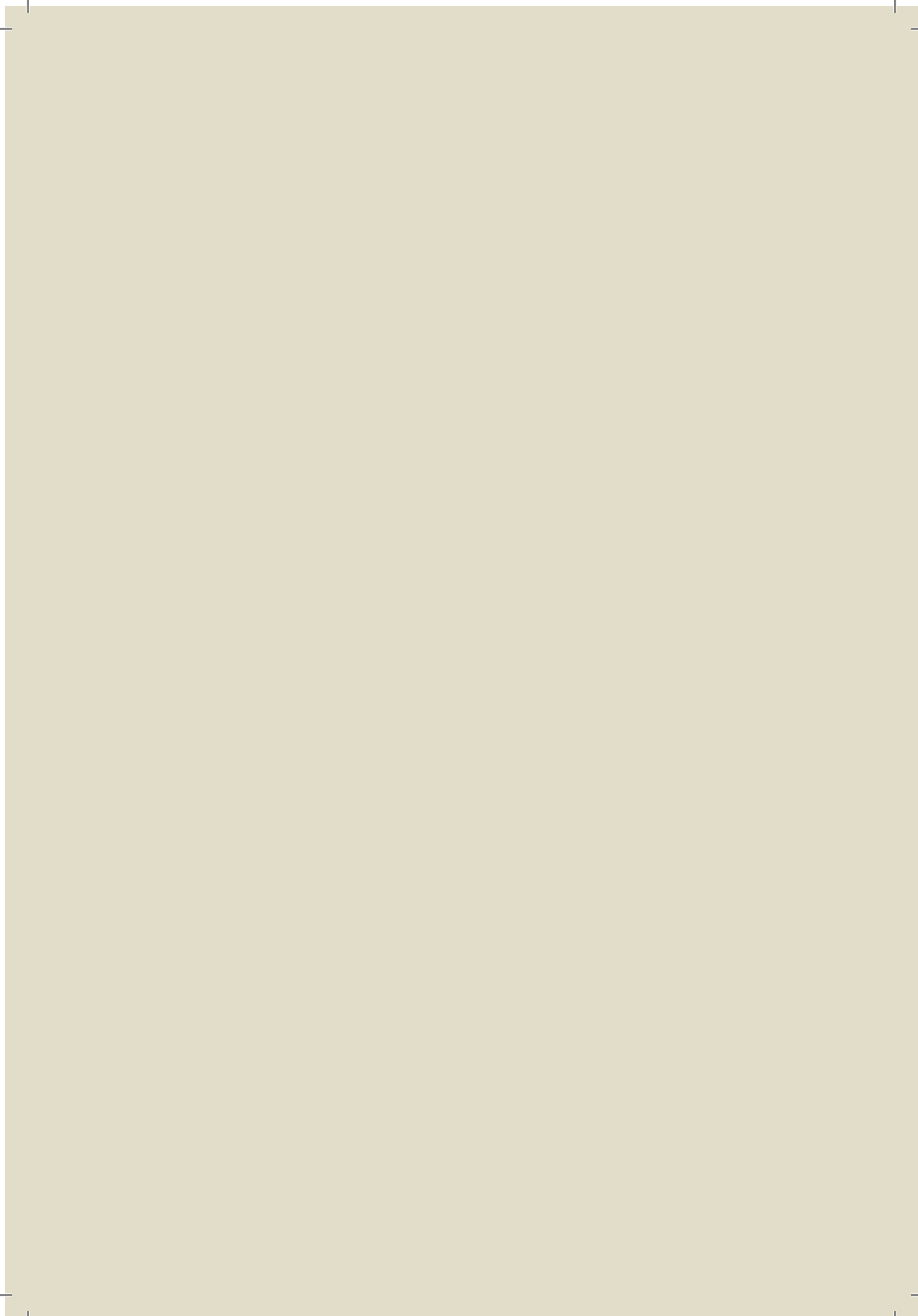


Local guide

# Linköping

This is your local guide to life in East Sweden, Östergötland. It is an area where you can design a life that suits your needs and dreams. It is an area where tech is as important as the archipelago, the forests, the agricultural landscape and the diversity in everything in between.



# Welcome to East Sweden

Östergötland is often called East Sweden in English. East Sweden is a region, as the name suggests, in the southeast of Sweden - with the Baltic Sea on one side and Lake Vättern on the other.

Our story tells us that we are known for our natural resources such as agricultural land but also deep forests, plenty of lakes and historic landscapes. A few places to put on your bucket list for East Sweden might be the archipelago by the Baltic Sea, the large zoo outside Norrköping, the mountain Omberg, the engineering masterpiece channel called Göta Kanal and the monastery church as well as the charming old village of Vadstena.

If you would like to enjoy local foods we highly recommend raggmunk med fläsk, a shredded potato pancake with thick bacon, or grön ärtsoppa, split pea soup.

We really enjoy life in East Sweden since it is a region providing us with the opportunities to create and design a life that suits us.

# Table of Content

East Sweden .....	6
<b>This is Where You Meet the Future .....</b>	<b>10</b>
Quick Facts .....	12
Meet the future in Linköping.....	13
Life-friendly city .....	15
<b>Relevant Areas of Expertise .....</b>	<b>16</b>
Linköping Science Park .....	18
<b>Linköping University and Incubator (LEAD) .....</b>	<b>20</b>
Linköping University, LiU .....	22
Abhishek Jacob's Story: From India to Sweden.....	24
<b>Take Leadership and Ownership of Your Situation .....</b>	<b>26</b>
Associations .....	28
Communities .....	28
Places to learn, apart from the university .....	29
<b>Personal notes .....</b>	<b>30</b>



Linköping Cathedral built in the 12th century.  
Photographer: Fredrik Schlyter

## East Sweden

We listed the largest towns in East Sweden and what typically defines them, but with a twist, in order for you to find the place that suits you best. We have a lot of other places to live and visit as well, you'll find them all here: [eastsweden.se](http://eastsweden.se)

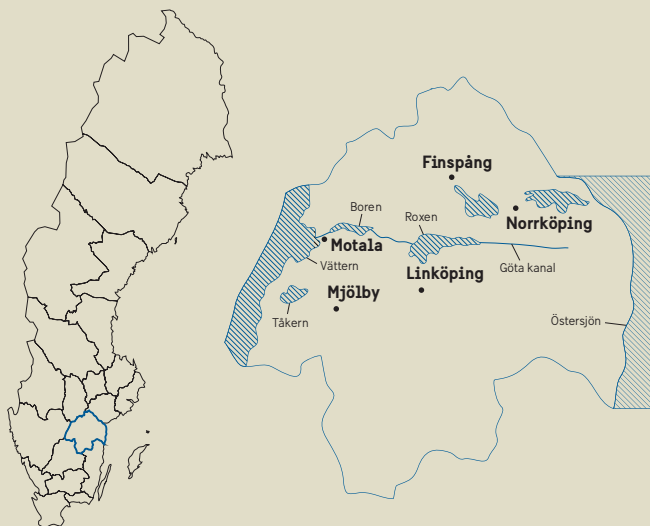
**Linköping** - This is where academic tech people can lead a perfectly organised life with soft adventures around the corner.

**Norrköping** - In Norrköping we find creative souls looking for ways to spend free time in the old and today vibrant areas of Industrilandskapet. It is an area with a variety of culture and good food situated within the many old and beautiful factories. If you are interested in techniques associated with visualisation and movie making, Norrköping is the place for you.

**Motala** - The lake city of East Sweden is situated by the clear and mythical lake Vättern. Motala is proud of its historical wings from past innovators such as Baltzar von Platen, who founded the channel Göta Kanal and Motala verkstad. The latter is the industrial cradle of Sweden. Today Motala suits those who specifically enjoy cycling since the world's largest recreational bike race around lake Vättern, Vätternrundan, starts and finishes here.

**Mjölby** - In the middle of Östergötlands agricultural landscape you will find Mjölby. Mjölby is home to several large international companies such as Toyota Material Handling who build fork-lifts and Väderstad with their highly efficient farm machinery. Mjölby may also be attractive to food lovers since Mjölby, together with a collaboration of stakeholders, are about to create a Food Experience Center.

**Finspång** - In the northern wood- and lakelands of East Sweden you will find Finspång. Finspång has a tradition of industrial manufacturing that heads back several centuries. It is a perfect place for those who seek the combination of outdoor life and work opportunities at exciting global companies like Siemens Energy and Gränges.



**“Being open-minded and goal-oriented brought me to Siemens Energy in Finspång as a Consultant. Great environment here to learn different technical areas and meet up with great like-minded people from different countries.”**

Raziye Abulaiti, Self-employed technical consultant at Siemens Energy. Masters in Industrial Engineering at LiU.



Student house at Linköping University.  
Photographer: Håkan Sundblad

# This is Where You Meet the Future



Part of what people believe to be the future is already happening in East Sweden. In Linköping, we dare say you will meet the future.

# Quick Facts

## **Population**

168 000 (2025) (a young population, the average age is 40,5 years old, which is one year younger than the national average)

## **Level of education**

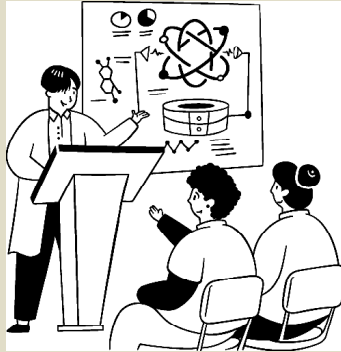
39% have a higher education. It is 10% higher than the national average. A high education level means post-secondary education for three years or more.

## **How to get to Linköping**

It is easy to travel to Linköping by train, it takes approximately an hour and a half from Stockholm. If you go by car, E4 will take you from Stockholm in two hours and Jönköping in one hour. Linköping City Airport has several flights with KLM every day that take you via Schiphol to wherever you like in the world.

## **Linköping as a place to live**

We have public, private and international schools. Our hospital is a University Hospital (US) with highly specialized care in close connection to Linköping University, LiU. LiU is highly renowned and one of Sweden's largest universities. (flip to page 22)



## Meet the future in Linköping

How can Linköping be so sure this is where you meet the future? Well, part of what people believe to be the future is already happening here.

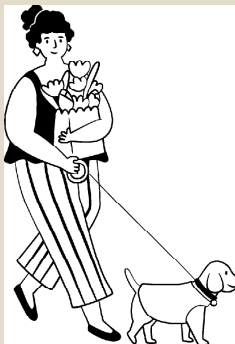
We take pride in having a tech-sector that continuously strives for a better, cleaner and safer world. We are strong within the development of aviation and space technology, information and communication technology, medtech, greentech, advanced materials, vehicle safety, and cyber security.

The streaming media technology that laid the foundation for Netflix actually originated in Linköping. Being Swedish, we usually do not brag but we are proud to be considered the number one high-tech city in Sweden. Linköping is home to a number of groundbreaking innovations - from the aircrafts of SAAB and the mobile communication solutions of Ericsson, to the image management solutions of Sectra and world-leading tire pressure monitoring system of Nira Dynamics.

What is the key factor to the high level of innovation in Linköping? Well, it has been a politically prioritised area and we have collaboration in our DNA. We have created business arenas such as Mjärdevi which has made us the hometown of global companies like Actia, IFS and many others.

Linköping has been awarded with the Swedish Student City Award twice. We are of course very proud and we continuously work hard to develop Linköping into an even better and attractive place for students - both during and after studies.

It's not just students who enjoy life in Linköping. The city is growing and we believe that it has to do with the life you can live here. Even though we are a fairly large city with Swedish measures, nature is just around the corner. We like to call ourselves a life-friendly city.



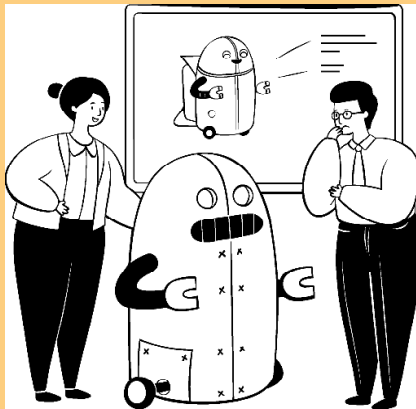
## Life-friendly city

In Linköping we have a good representation of culture with both in- and outdoor theatres and concert arenas. We have a large number of sports associations, some of our well known and successful teams are Linköping Football Club (LFC), Linköping Hockey Club (LHC) and our swimming association LASS.

The concept of a life-friendly city also consists of sustainability, which encompasses social and economical as well as environmental areas. We have been certified as a Fairtrade City since 2011. We aim to be carbon neutral by 2025. Linköping is also a member of the Viable Cities' Climate Neutral Cities 2030 initiative.

We believe in joining forces to reach our goals. When we do that we create pride and a sense of belonging. This makes us - the citizens, companies, associations and public sector - do what we can, when we can, in order to always strive to make Linköping an even better place to live and work.

# Relevant Areas of Expertise



We have already mentioned some of the companies you find in Linköping. If we are to be honest, we don't think you need a long list. The world is in constant change and so are companies. However, there are some areas of expertise that we would like to tell you a little more about since they are part of what defines our city, and they just might be your future.

# Linköping Science Park

Linköping Science Park is a municipally owned company. Our task is to ensure that 600 tech companies with 14 000 employees grow and develop in the best way possible. We support companies in every stage, from brand new ideas and small startups to large international companies. Our projects and programs make it possible for talents and businesses to learn and grow together.

Thanks to early adoption, our will to explore new techniques and new ways of working, and thanks to all the brilliant minds cooperating over the years – we are proud of being an international inspiration. We, the people of Linköping Science Park, take on future challenges together. We inspire and support each other with the common objective of enabling groundbreaking solutions for modern society.

Linköping Science Park is described as the fourth generation of Science Parks. That means we are not bound to a certain place or office. We work throughout Linköping in several physical hubs. The hubs are described in the following paragraphs.

## **Mjärdevi**

Since 1984, the business park Mjärdevi in Linköping, has been a place where talent grows. It started with the establishment of a few research and technology companies, in near proximity to the university. The power, the knowledge and the ambition of these people made the foundation of a community, which in almost four decades has grown into being a leading international environment for innovation and growth.

**Vreta kluster**

Vreta Kluster is a business park, a meeting place, and an arena of development of the green industry, i.e. those working in agriculture, forestry, animal husbandry, food, renewable energy, aquaculture and gardening. We provide research, company and funding networks and contacts along with support for business development and applications. Our objective is to stimulate innovation, technological progress and business development for companies, thus resulting in growth for the green industry.

**Ebbepark**

In the midst of Linköping, between the university and city centre, a new inner city environment is being built. Ebbepark will be a place for people and companies to thrive together with a sustainable lifestyle. Here you find exciting hubs such as Makerspace and East Sweden Game.

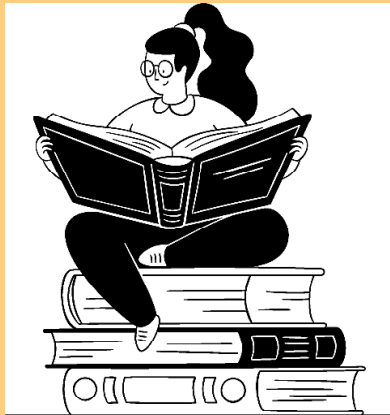
**Cleantech Park**

Cleantech Park is a collaborating arena with focus on environment, energy and sustainability. The park is a mix of companies and supportive actors within marketing and innovation.

**Cavok District - IMA One**

Innovative Materials Arena Network is an area for operations within aviation, space and advanced materials. Here, companies that work with advanced materials in one way or another gather with the ambition to share resources and ideas. The site has a strategic location, primarily for aerospace-related organisations, but also for companies in need of a creative environment with access to research, test labs, synergies and collaboration opportunities.

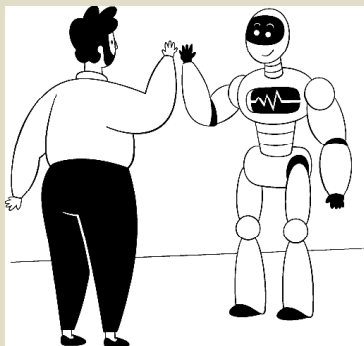
# Linköping University and Incubator (LEAD)



Linköping University, LiU, is ranked among the top universities in the world according to international rating. Every year several companies detach from the university to live their own lives among regular businesses.

## Linköping University, LiU

Linköping University, LiU, is ranked among the top universities in the world according to international ratings. LiU received university status in 1975. The university vision is “with the courage to think freely and innovate.”



The 46 200 students of LiU are located at four different campuses, all seeking answers to complex questions of our society. The campuses are located in different innovative areas with a strong connection to local arenas, businesses and expertise.

LiU is well known for a variety of different programs in civil engineering, medicine, IT and computer science. The university is in close collaboration with the local society and business community.

Research and development is a large part of Linköping University. The Swedish government has given LiU appropriations within five different areas, with the university being head of three of them, to create world leading research.

These areas include IT and mobile communication, material knowledge, safety and emergency preparedness. Additionally, the Knut and Alice Wallenberg foundation is funding several large scale research programs at the university such as WCMM (Wallenberg Center of Molecular Medicine), WASP (Wallenberg Autonomous Systems and Software Program) and WISE (Wallenberg Initiative Material Science for Sustainability).

Every year several companies detach from the university to live their own lives among regular businesses. Some might take their start at the university owned incubator LEAD (LiU Entrepreneurship and Development). LEAD is a non-profit organisation and they always stand by and support the companies. Famous companies that grew from the incubator are for example Softube, Voyado and NEO4J.

**“Linköping University welcomes young talents from all over the globe to join us in our endeavour to develop new knowledge and by innovation and boundary crossing research take on the challenges of the day.”**

Johan Ölvander, Dean at the faculty of Science and Engineering at Linköping University.

## Abhishek Jacob's Story: From India to Sweden

"I came to Sweden because I knew Sweden was famous for innovation and I actually found out that Linköping was one of the first in Europe to combine engineering and management studies, which was perfect for me, so I joined the masters program in Industrial Engineering & Management, with a specialisation in innovation management. In our early years in Sweden coming from India, we had some communication difficulties when interacting with authorities, hospitals, and it was a challenge to understand and navigate this new welfare system. This led me and my co-founder Naveen to think of how we can solve this problem because we knew many people faced the same issue. This led to the idea of Worldish, a company that uses technology to create equal access to services through safe communication, that eventually led to our innovation - Helen, a digital communication assistant breaking language and other communication barriers in core services within healthcare and welfare.

Helen and Worldish concepts were nurtured together with the support of LiU Innovation to a prototype stage. Then when we started to build the commercial model around the business, we were supported by LEAD and we started getting our first commercial contracts and built a core team around us. LEAD helped us to refine our business model, sales, helped us in raising investment rounds and form processes around running the core business.

Worldish was born to unite all cultures and diversities among people through safer communication, and we have a strong multi-cultural team that helps work towards our vision and drives us to make the best possible products to serve our customers and users.

Sweden is a great place to study because of its practical approach to education and application of education to real life. It's the perfect place for people who are problem solvers, those who are passionate about social impact and those who like to create a positive change. The open and flat organisation culture in the ecosystem enables great exchange and adoption of ideas. That creates much more opportunities for aspiring entrepreneurs or intrapreneurs to gain acceptance and excel.

Advice. There are many challenges out there that need great solutions. Pick one, look for help around you and work towards a solution, don't fear failure and keep moving forward. Sweden's innovation support system is world class, so make sure you're a part of it!"

Abhishek Jacob, Founder and CEO of Worldish.

**In Sweden You  
Need to Take  
Leadership and  
Ownership of  
Your Situation**

At work as well as in private you need to show and take initiatives to achieve success. To make the transition to Linköping a little easier we made a list of a few places where you can find associations and communities as well as a few places that might be of interest to you. Feel free to continue to add to this list, this is your handbook - please do write in the margin!

## Associations

You can search for associations that might interest you on the municipality website. You can also add your association and start a new one if you can't find an existing one: [linkoping.se](http://linkoping.se)

## Communities

**Studentlivet.se** - Studentlivet.se is a platform with information that facilitates and makes information, study and social activities available to all students at LiU: [studentlivet.se/en](http://studentlivet.se/en)

**Makerspace** - Makerspace in the creative hub for people interested in creating, innovating, art and technique.  
Run by Makerslink: [makerslink.se](http://makerslink.se)

**East Sweden Game** - East Sweden Game is a community, workspace and business incubator for developers of games and digital experiences: [eastswedengame.se](http://eastswedengame.se)

You can find more communities within Linköping associated with Linköping Science Park here: [linkopingsciencepark.se](http://linkopingsciencepark.se)

**DoSpace** - DoSpace wants to make work awesome. Founded in Linköping, they create co-working spaces in several cities, their aim is to democratise the access to a really cool office.

## Places to learn, apart from the university

**Folkuniversitetet**: [folkuniversitetet.se](http://folkuniversitetet.se)

**Medborgarskolan:** [medborgarskolan.se](http://medborgarskolan.se)

**Studieförbundet vuxenskolan:** [sv.se/en](http://sv.se/en)

**ABF:** [abf.se](http://abf.se)

**Studieförbundet:** [studieforamjandet.se](http://studieforamjandet.se)

“Linköping is a true international hub. With more than 70 international R&D companies based in Linköping Science Park and more than 2000 international students and researchers at Linköping University, the number of international talent is high. We are immensely happy to receive new talent to Linköping and I hope you will find your way into the Linköping Community when reading this book. You are most welcome!”

Lena Miranda, CEO Linköping Science Park.



## **Thank you to the following for being helpful with information and quotes:**

Abhishek Jacob

Raziye Abulaiti

Johan Ölvander

Therese Lindkvist

Emma Krantz

Joshua Joseph Idiong

Lijun Peng

Lorna McGeown

Lena Miranda

Claes Ekström

Maria Samson

Eva Rådander

Sofia Löf

Helena Jalkner

Mariethe Larsson

Christian Biller, Swedish Institute

## **Sources:**

[SCB.se](https://www.scb.se)

[Ekonomifakta.se](https://www.ekonomifakta.se)

[Finspang.se](https://www.finspang.se)

[Motala.se](https://www.motala.se)

[Mjolby.se](https://www.mjolby.se)

[Linkoping.se](https://www.linkoping.se)

[VisitLinkoping.se](https://www.visitlinkoping.se)

[Norrkoping.se](https://www.norrkoping.se)

[EastSweden.se](https://www.eastsweden.se)

# Meet the Future in East Sweden

The county of Östergötland is often called East Sweden in English and this is where you meet the future.

East Sweden is an area of innovation, technology and academic development. It is an area where we believe in joining forces to reach our goals. It is a part of Sweden with life-friendly cities, beautiful scenery and countryside just around the corner of every town. East Sweden is the home of several global companies as well as a highly renowned university, LiU, and we have collaboration in our DNA. This is your local guide to East Sweden.

Välkommen!